

Quick Overview of your GolfBuddy



- ◀ Left : Change Hole
- ▶ Right : Target Info/Edit Target
- Center : Confirm/ Edit Score
- ▲ Up : Change Green
- ▼ Down : Change Unit(meters/yards)

Status Icon	What it means
	Satellite Reception Signal
S7	Satellite Strength Indicator
H1	Hole Number
P4	Par Information
Y	Unit Indicator
	Battery Level
# 235	Shot Distance Measurement

Please refer to your User Manual or visit www.gpsgolfbuddy.com for more detailed information about your GolfBuddy

AVAILABLE ACCESSORIES



Belt clip/Plastic Holster



USB Data Cable



Rechargeable Battery



Leather Holster



Wall Charger



Car Charger



Temporary Cart Mount



Permanent Cart Mount



PRO TOUR

Quick Start Guide

Welcome and thank you for choosing the GolfBuddy. The GolfBuddy is ready to use right out of the box, without having to deal with complicated interfaces to your computer. Please read the quick start guide prior to using the GolfBuddy. If you ever have any questions, please visit us online at www.gpsgolfbuddy.com to access an online Q&A

Thanks,
GolfBuddy USA

Part 1. Preparing the Unit

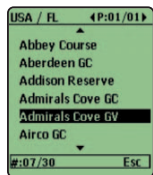
Step 1. Charging

- Connect the charger into the slot on the bottom of your GolfBuddy.
- Charging time: 3-4 hours
- Standard usage time*: 13 Hours
- AAA battery back up

*Estimated battery life is based on use of the GolfBuddy unit with the backlight turned off.

Step 2. Checking Your Course

- Turn on your GolfBuddy and check if your course is pre-loaded in your GolfBuddy.
- If you don't find your course, visit us online at www.gpsgolfbuddy.com and update your course library or request your course data.



Part 2. At the Course

Step 1. Acquiring Satellite Signal

- Power on your GolfBuddy while facing it up towards the sky.
- Keep your GolfBuddy steady for 1-2 minutes to establish a satellite signal*.

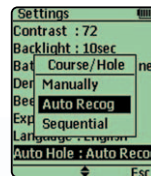
*Initial satellite connection takes 3-5 minutes or longer

Step 2. Automatic course/hole recognition

- Your GolfBuddy will automatically choose the course you are in.
- All you have to do is step in to the course with your GolfBuddy.
- You don't have to push any buttons!

*Setting to Automatic will allow your GolfBuddy to automatically select the course and hole for you.

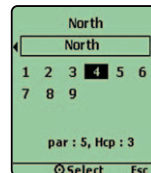
- Your GolfBuddy will also automatically update the hole number as you make your way around the course



Part 3. Basic Instructions

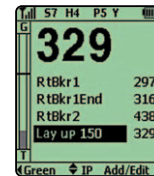
Step 1. Changing the Course/Hole

- Once a satellite signal has initially been established, you will be able to manually select the course and hole if you wish to.
- At the play screen, push your toggle button to the left twice. This will take you to hole selection screen.
- At the hole selection screen, push left/right on your toggle button to select the hole you want.
- Then push in the toggle button to select.



Setp 2. View Target Information

- This function will display your remaining distance to bunkers, hazards, targets, Layup, Etc.
- At the play screen, go to the target information page by pushing the toggle button once to the right.
- On the target bar, the solid black line indicates the selected target and the shaded gray area along the bottom indicates your current position.



Step 3. Measuring Shot Distance

- Before your shot, press the mark button located along the right side of the GolfBuddy.
- The screen will then display [Mark New Position?] and push in the toggle button once to select.
- Take your shot and walk to the position that your ball has landed.
- The number will continually change as you move, showing the offset distance from the marked position as you walk towards the ball.
- Press cancel button to go back to the play screen.



Step 4. Score Tracking

- On the play screen, navigate to score tracking screen by pushing the toggle button to the left, once.
- When the hole information screen appears, push in the toggle button to select.
- Push up or down on the toggle button to select holes, and push left or right on the toggle button to select the score.
- Push in the toggle button to store your score.

